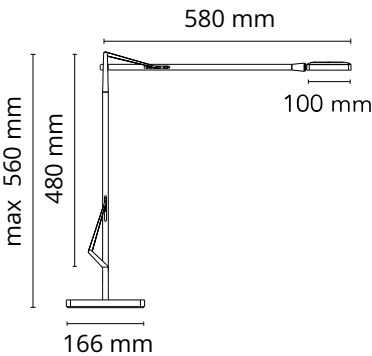


Kelvin Led Base

Designed by Antonio Citterio/assistant Toan Nguyen, 2009

8W - 285lm - 3000K

Adjustable table lamp providing direct lighting, with double pantograph arm and adjustable head. Fused aluminum alloy body. Die-cast aluminum outer head, with injection-molded methacrylate diffuser. BASE external cover in ABS. Extruded aluminum alloy square tube (12x12mm) structure, machined mechanically, so that it houses a stainless steel load-compensation spring and injection-molded acetal resin sliding blocks. 3 mm diameter wire outer tie rods. Available in white, anthracite, black or chrome finishes. The ON/OFF switch is electronic with optical mechanism located in the head. Two possibilities to choose: - PERSONAL MODE (orange switch) Dimm the light intensity you like. - GREEN MODE (green switch) Now Kelvin LED becomes Green, saving even more energy thanks to his automatic compensation of the ambience light.



Are you a professional and your project needs consulting and support?

BOOK AN APPOINTMENT

Main specifications

Mounting	Table
Environments	Indoor dry location
Light source type	LED
Light sources included	Yes
LED type	LED Module
Power (W)	8
Lumen Output (lm)	285

Physical

Colour	Anthracite
Length (mm)	581
Cord colour	Black
Net weight (kg)	3.9
Package volume (m3)	0.02
IP internal	20

Download

- Mounting instructions PDF
- Mounting instructions PDF
- Mounting instructions PDF

Photometric Files

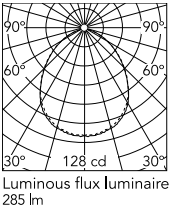
- LDT / IES LDT

Technical Drawings

- 2D ZIP
- 3D ZIP



Schematic light drawing



Photometric

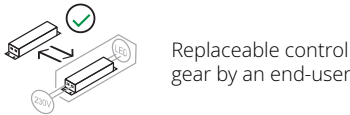
Lighting type	Direct
Light distribution	Symmetric
CCT (K)	3000
Extreme cut off	No

Electrical

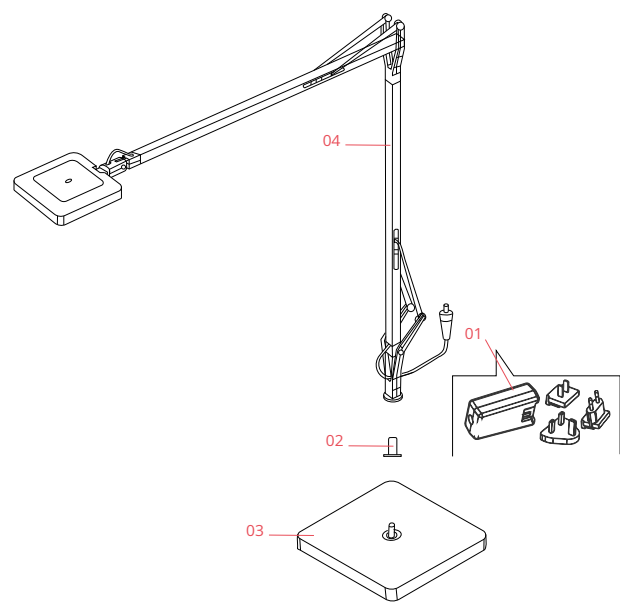
Insulation class	III
Frequency (Hz)	50/60
Main voltage (Vac)	100-240
Power supply	Remote included
Dimmable	Yes
Power supply type	Electronic 24V
Dimming interface	Dimmer Integrated
Plug type	Type A, Type C, Type G
Batteries inside	No

Ecodesign and Energy
Labelling

This product contains a light
source of energy efficiency
class F



Spare Parts



- | | | |
|-----|---------------------------------------|-----------|
| 01. | Black plug assembly kit & 24V driver | RF6600230 |
| 02. | Kelvin Led Black insert for lamp base | RF18764 |
| 03. | Kelvin led gm anthracite base | F3322033A |
| 04. | Kelvin led gm anthracite body | F3312033 |



RF6600230

Black plug assembly kit & 24V driver



RF18764

Kelvin Led Black insert for lamp base



F3322033A

Kelvin led gm anthracite base



F3312033

Kelvin led gm anthracite body